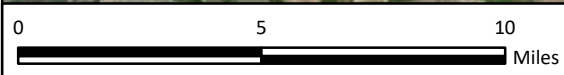




Project Location



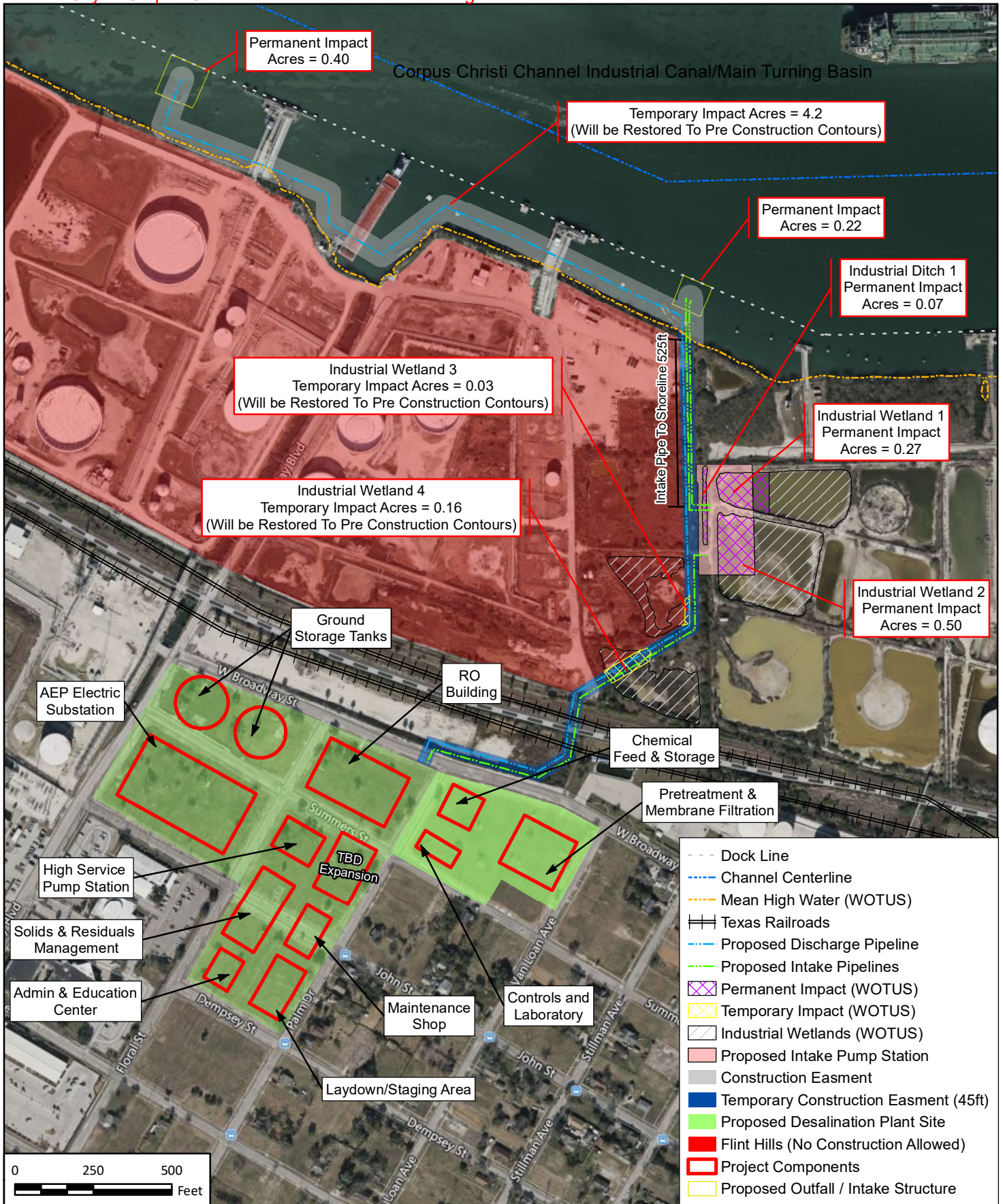
FRESE AND NICHOLS
FRESE AND NICHOLS, INC
800 N Shoreline Blvd #1600n
Corpus Christi, TX 78401
Phone - 361-561-6500



City of Corpus Christi
Seawater Desalination
Vicinity Overview

FN JOB NO	COR20596
FILE NAME	1_Aerial Overview.mxd
DATE	8/11/2023
Scale	1:250,000
DESIGNED	CS
DRAFTED	CS

1
FIGURE



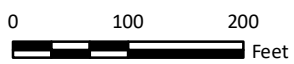
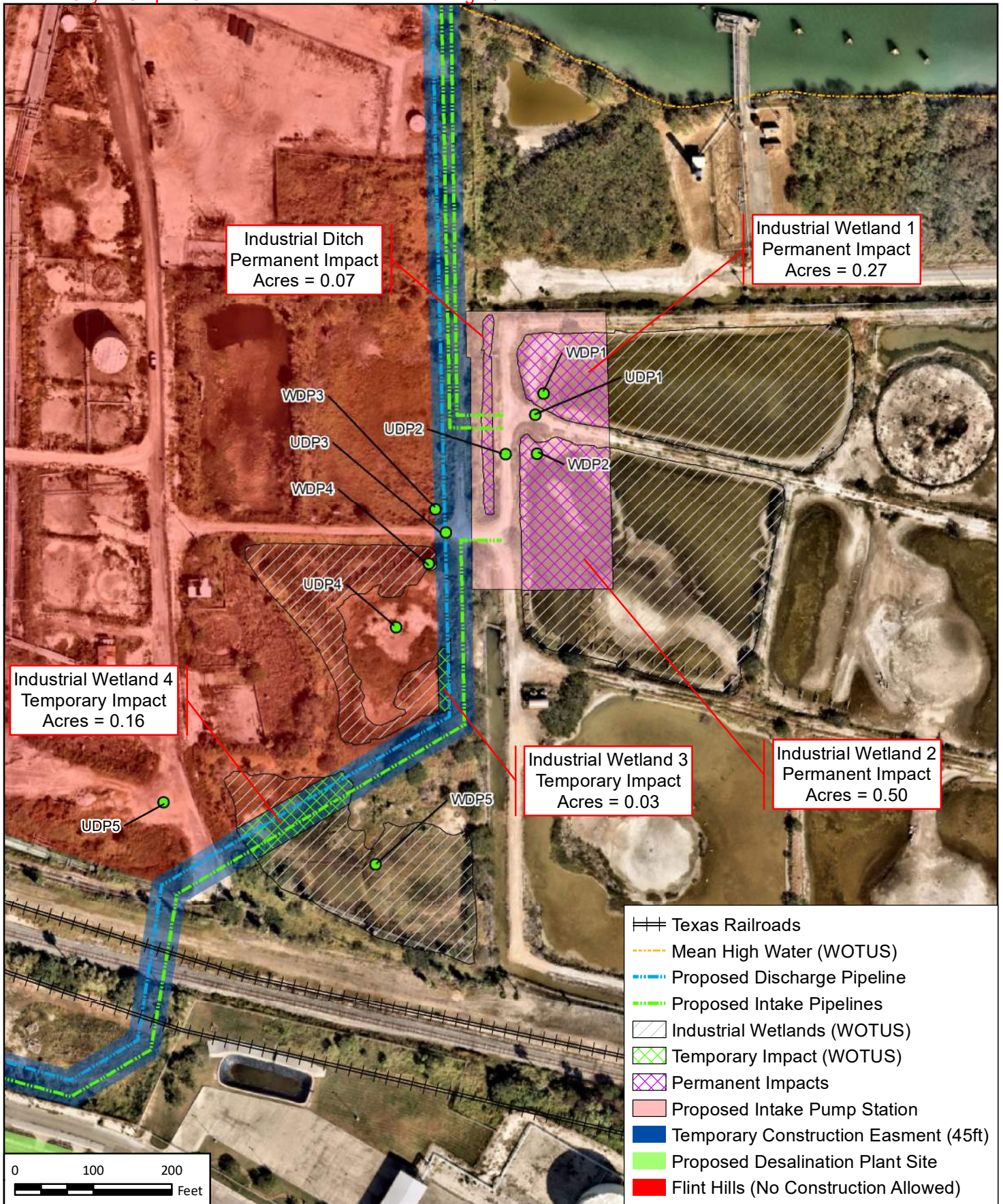
FRESE AND NICHOLS
FRESE AND NICHOLS, INC
801 Cherry Street, Suite 2800
Fort Worth, Texas 76102
Phone - 817-735-7300



**City of Corpus Christi
Seawater Desalination
WOTUS Overview**

FN JOB NO	COR20596
FILE NAME	Wotus_over.mxd
DATE	10/11/2023
Scale	1:5,000
DRAFTED	CS

2
FIGURE



FRESE AND NICHOLS
FRESE AND NICHOLS, INC
801 Cherry Street, Suite 2800
Fort Worth, Texas 76102
Phone - 817-735-7300

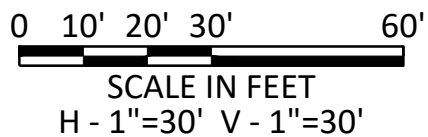
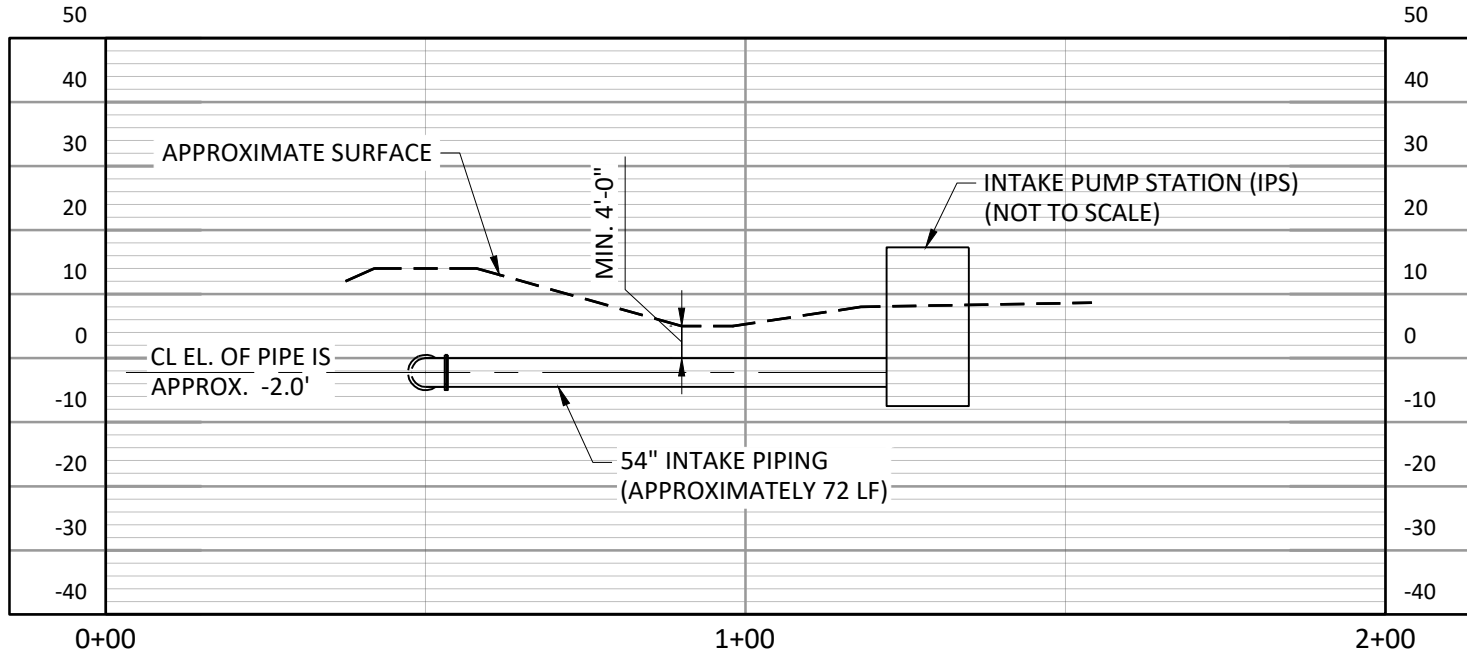


City of Corpus Christi
Seawater Desalination
Industrial Wetlands Inset

FN JOB NO	COR20596
FILE NAME	wetland_inset.mxd
DATE	9/29/2023
Scale	1:2,000
DRAFTED	CS

3

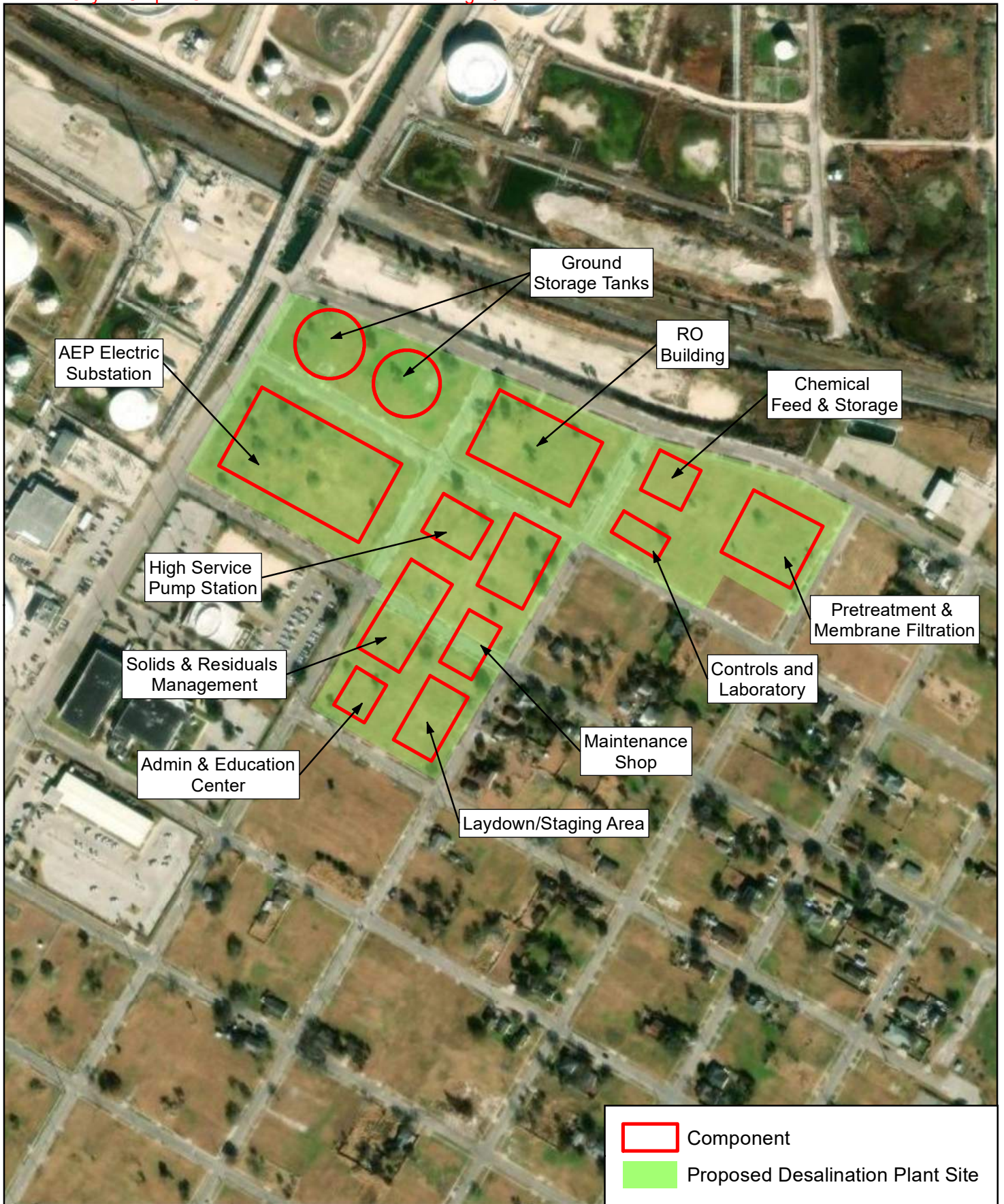
FIGURE



INTAKE PIPING SECTION AT IPS

SCALE: NTS

FIGURE 5



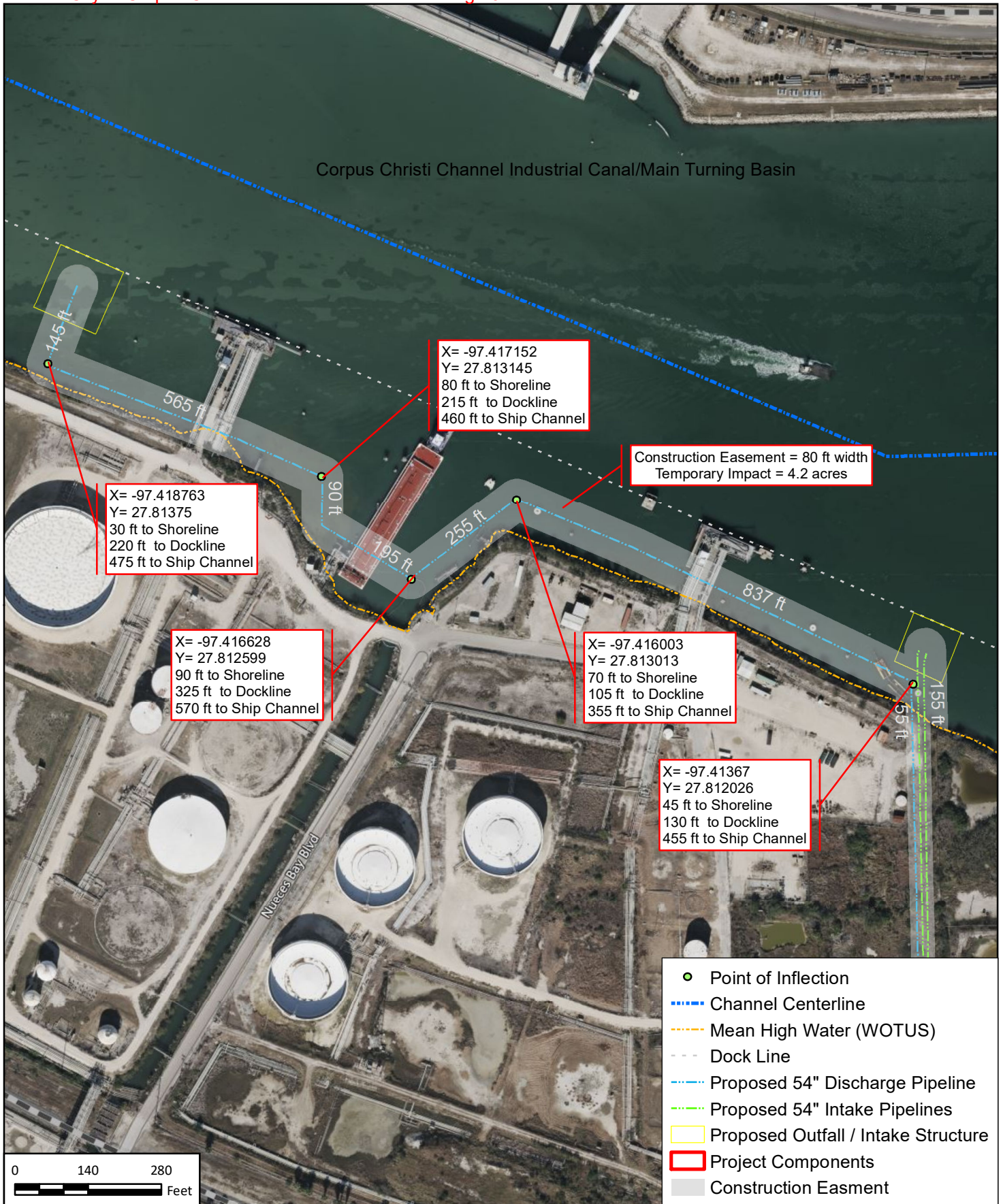
FRESE AND NICHOLS
FRESE AND NICHOLS, INC
800 N Shoreline Blvd #1600n
Corpus Christi, TX 78401
Phone - 361-561-6500



City of Corpus Christi
Seawater Desalination
Inland Project Facilities

FN JOB NO	COR20596
FILE NAME	Fig2a_Aerial_ProjectComponents.mxd
DATE	8/11/2023
DESIGNED	CS
DRAFTED	CS

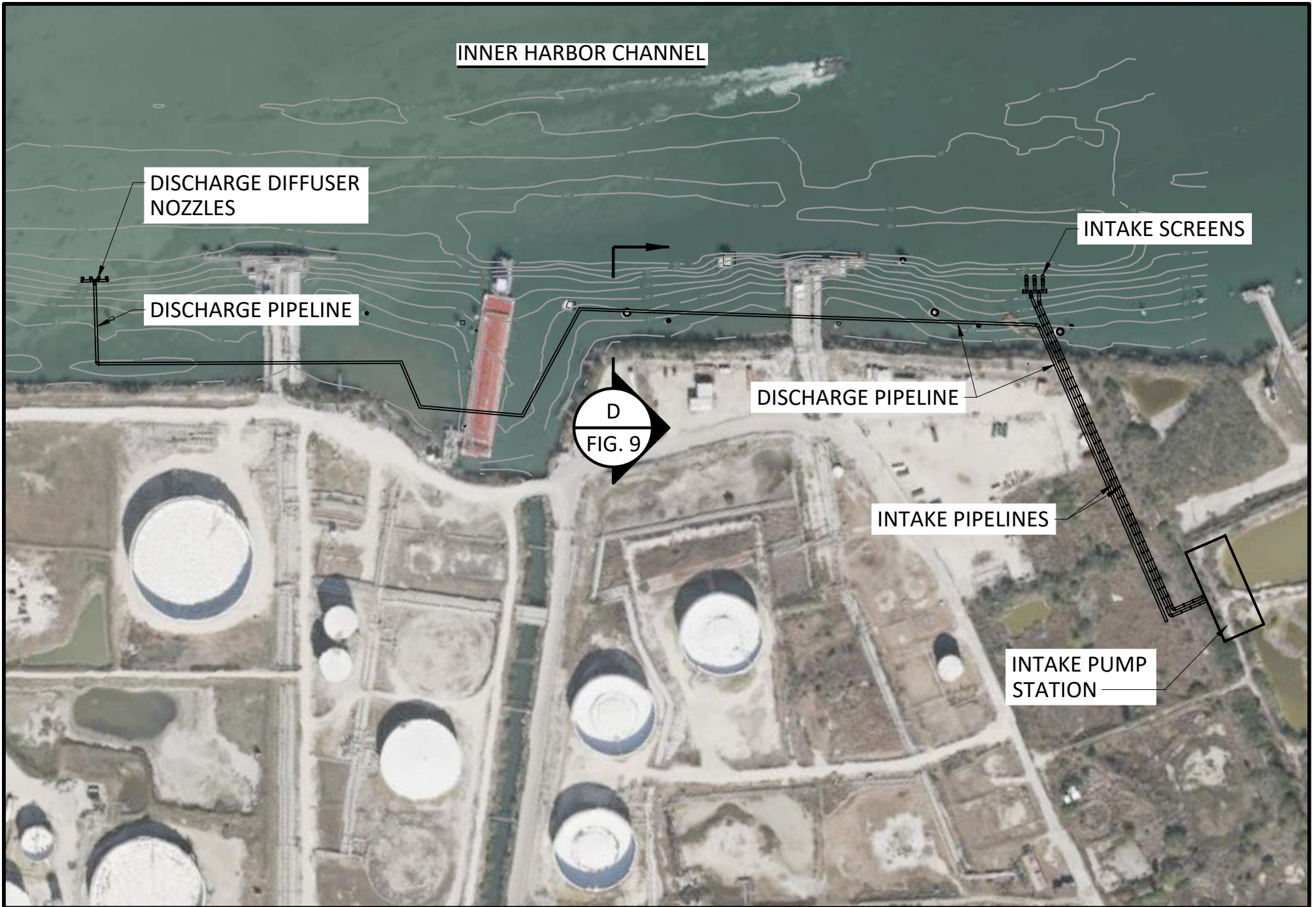
4
FIGURE



FREASE AND NICHOLS
FREASE AND NICHOLS, INC
800 N Shoreline Blvd #1600n
Corpus Christi, TX 78401
Phone - 361-561-6500

City of Corpus Christi
Seawater Desalination
Pipeline Inset

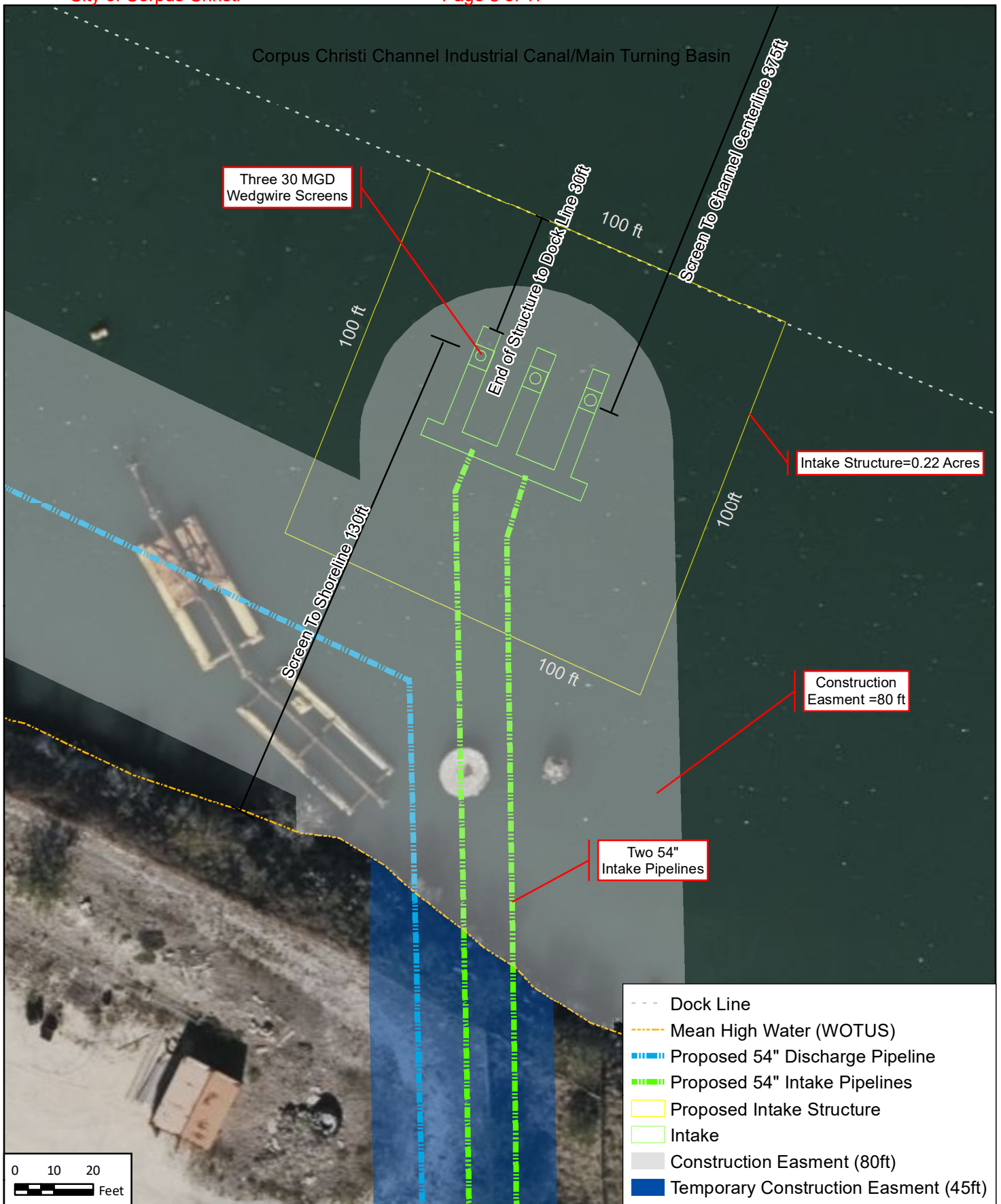
FN JOB NO	COR20596	7 FIGURE
FILE NAME	legnth_pipe.mxd	
DATE	9/29/2023	
Scale	1:3,000	
DRAFTED	CS	



OVERALL PLAN

SCALE: NTS

FIGURE 1



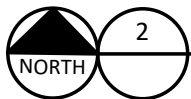
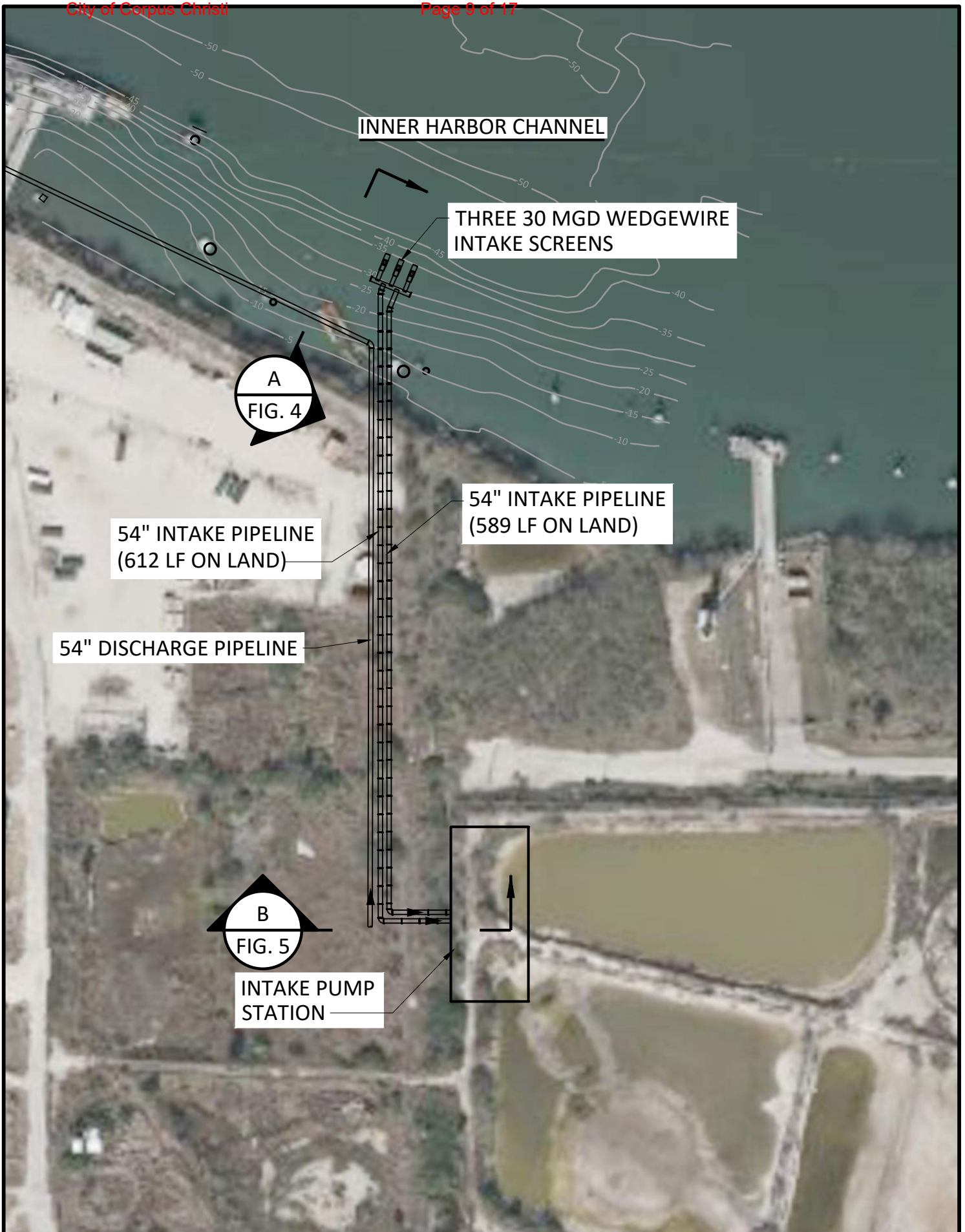
FRESE AND NICHOLS
 FRESE AND NICHOLS, INC
 800 N Shoreline Blvd #1600 n
 Corpus Christi, TX 78401
 (361) 561-6500



City of Corpus Christi
Seawater Desalination
Intake Details

FN JOB NO	COR20596
FILE NAME	intakedetails.mxd
DATE	10/2/2023
Scale	1:400
DRAFTED	CS

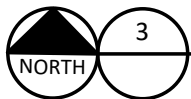
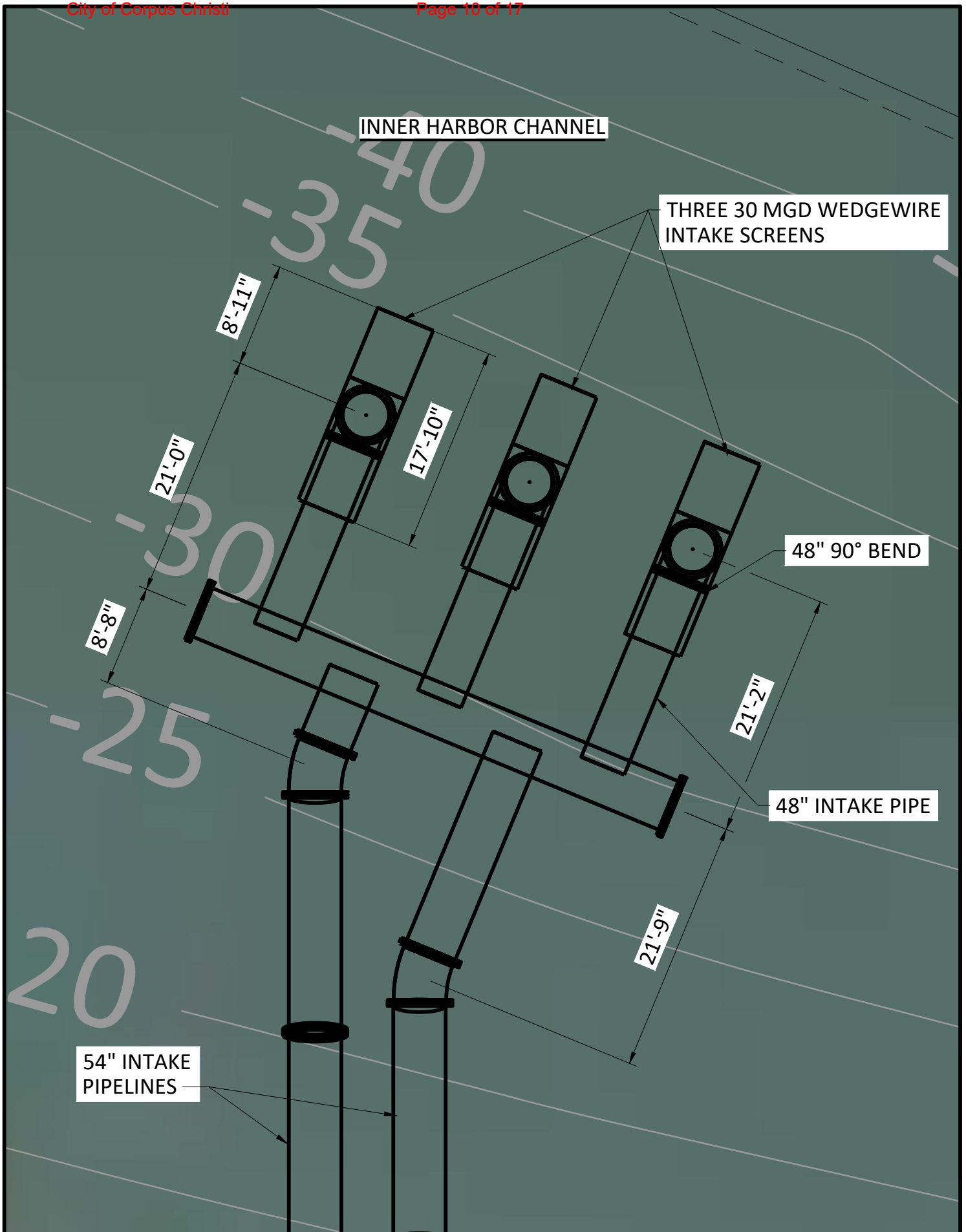
5
FIGURE



INTAKE PIPING PLAN

FIGURE 2

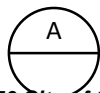
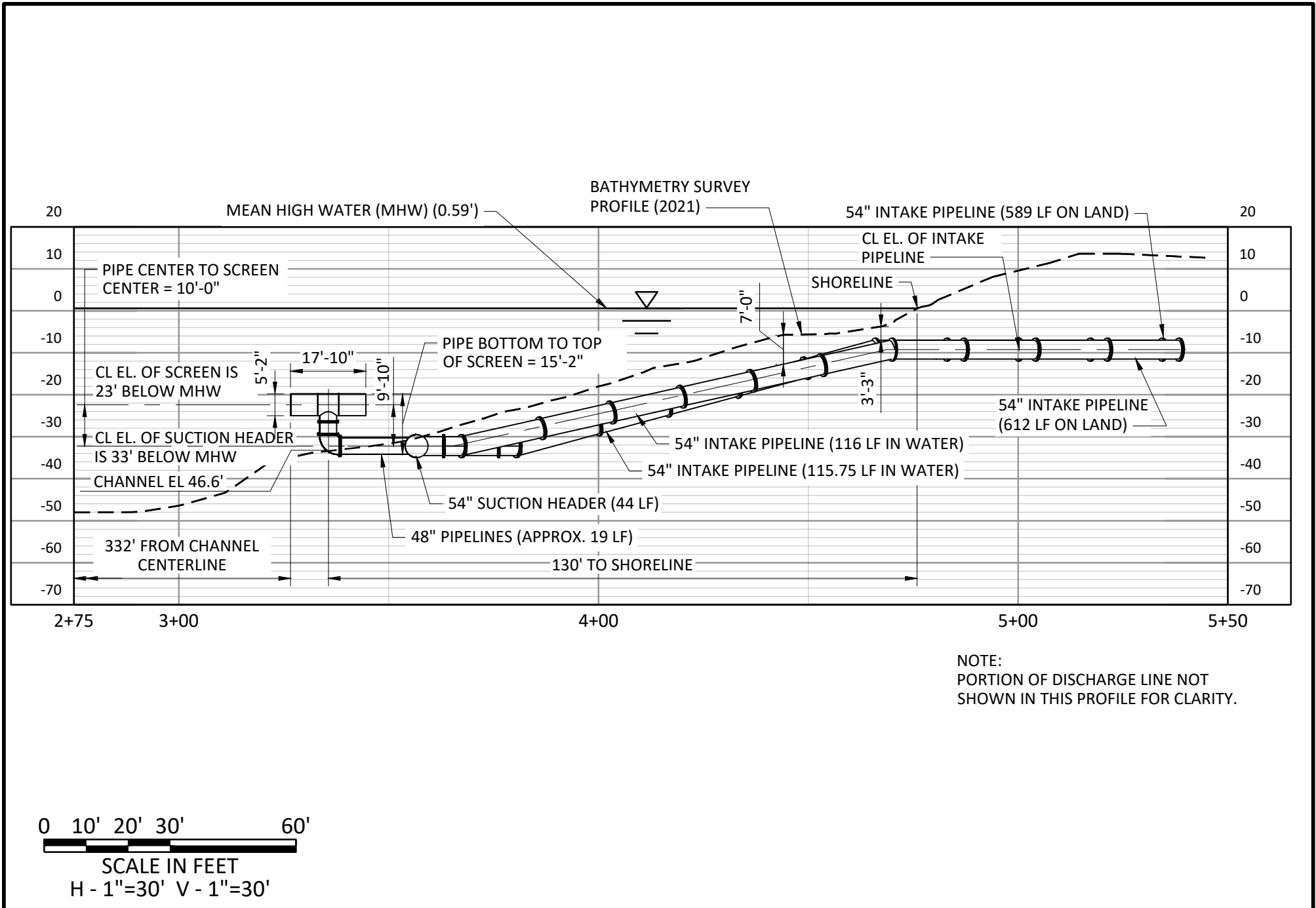
SCALE: NTS



INTAKE ENLARGED PLAN

FIGURE 3

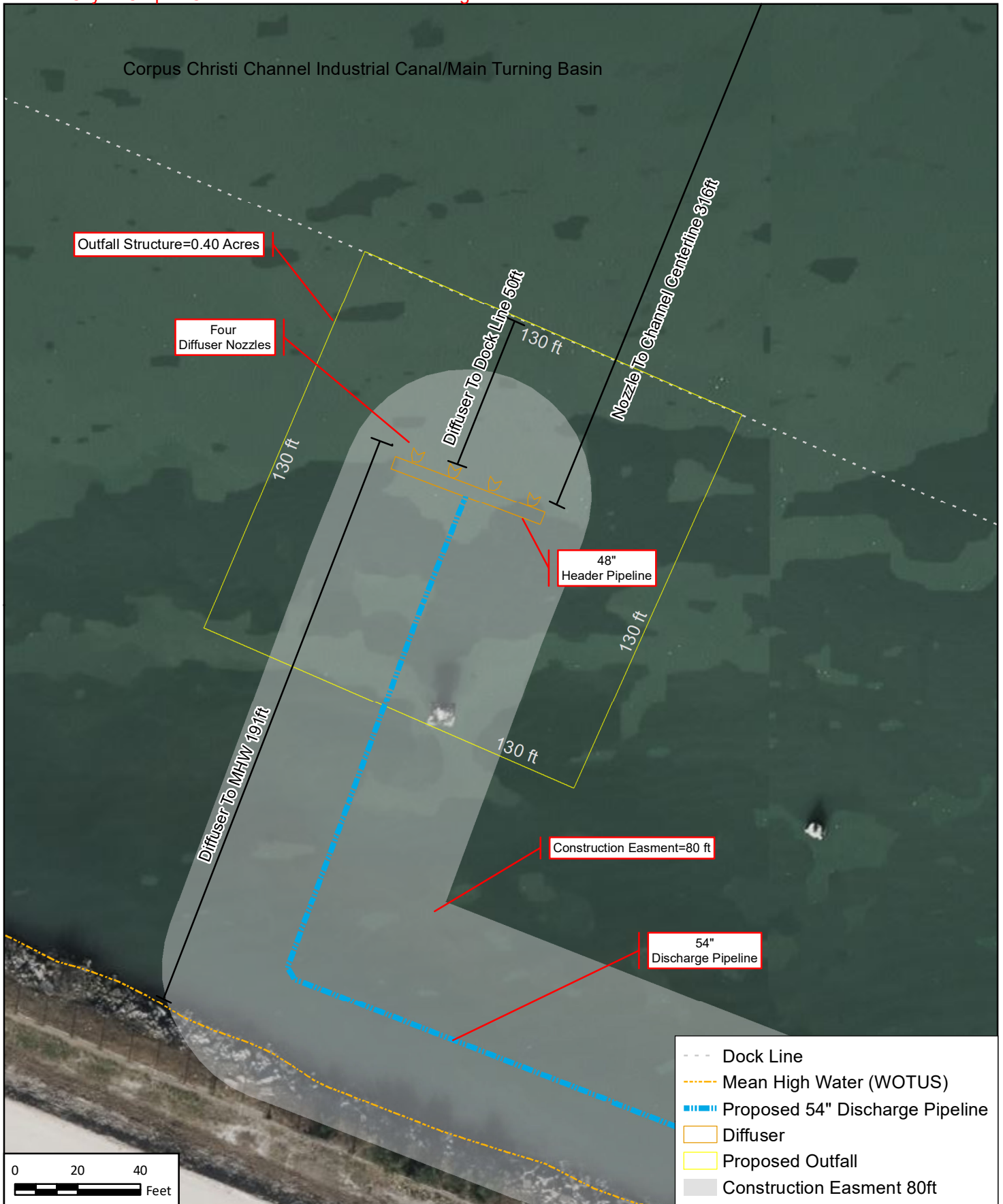
SCALE: NTS



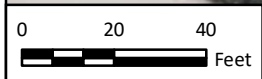
INTAKE PIPING SECTION LOOKING EAST

FIGURE 4

SCALE: NTS



---	Dock Line
---	Mean High Water (WOTUS)
■ ■ ■ ■	Proposed 54" Discharge Pipeline
□	Diffuser
□	Proposed Outfall
■	Construction Easment 80ft



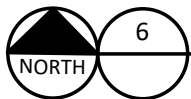
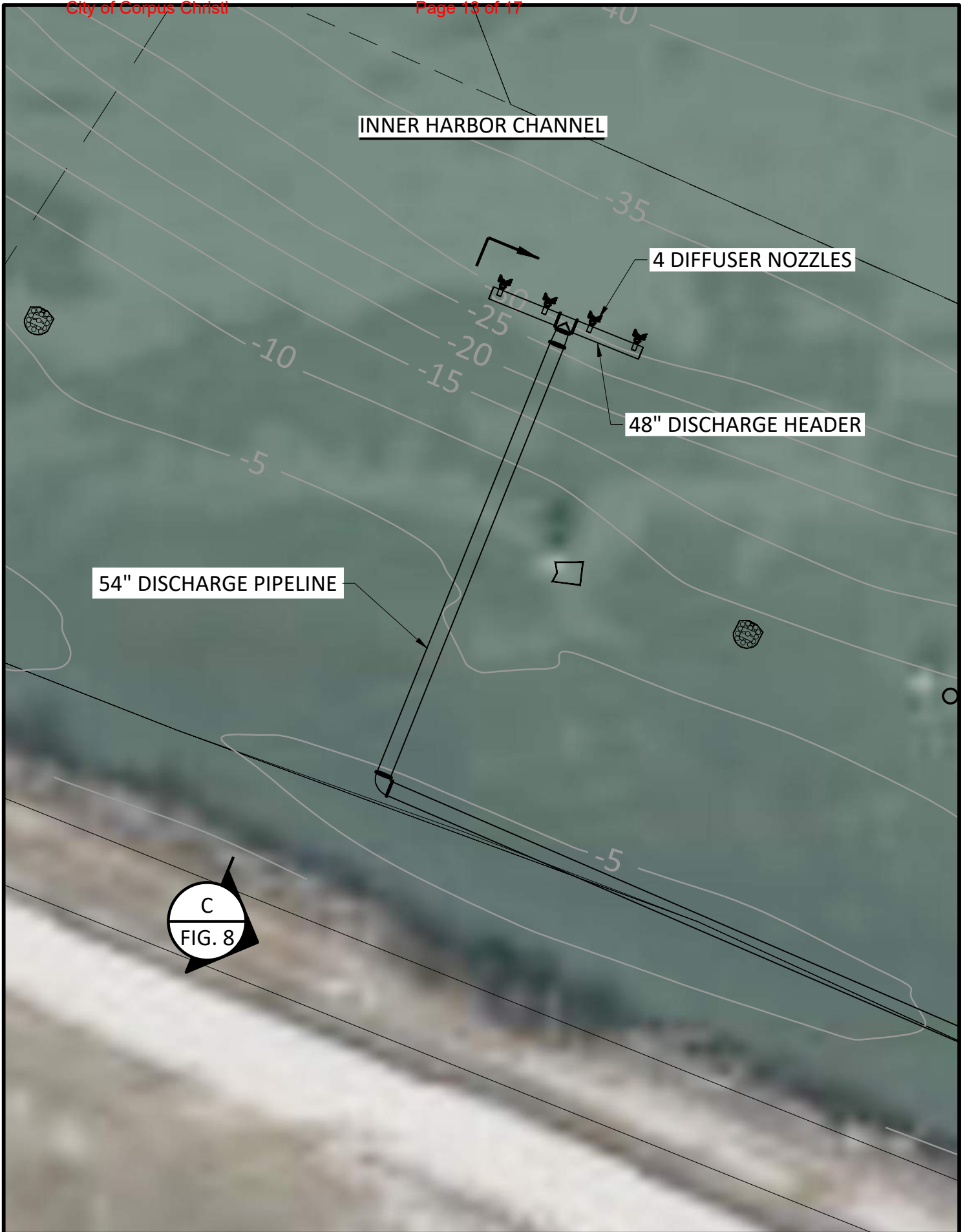
FREASE AND NICHOLS
 FREASE AND NICHOLS, INC
 800 N Shoreline Blvd #1600 n
 Corpus Christi, TX 78401
 (361) 561-6500



**City of Corpus Christi
 Seawater Desalination
 Outfall Details**

FN JOB NO	COR20596
FILE NAME	outfalldetails.mxd
DATE	9/28/2023
Scale	1:500
DRAFTED	CS

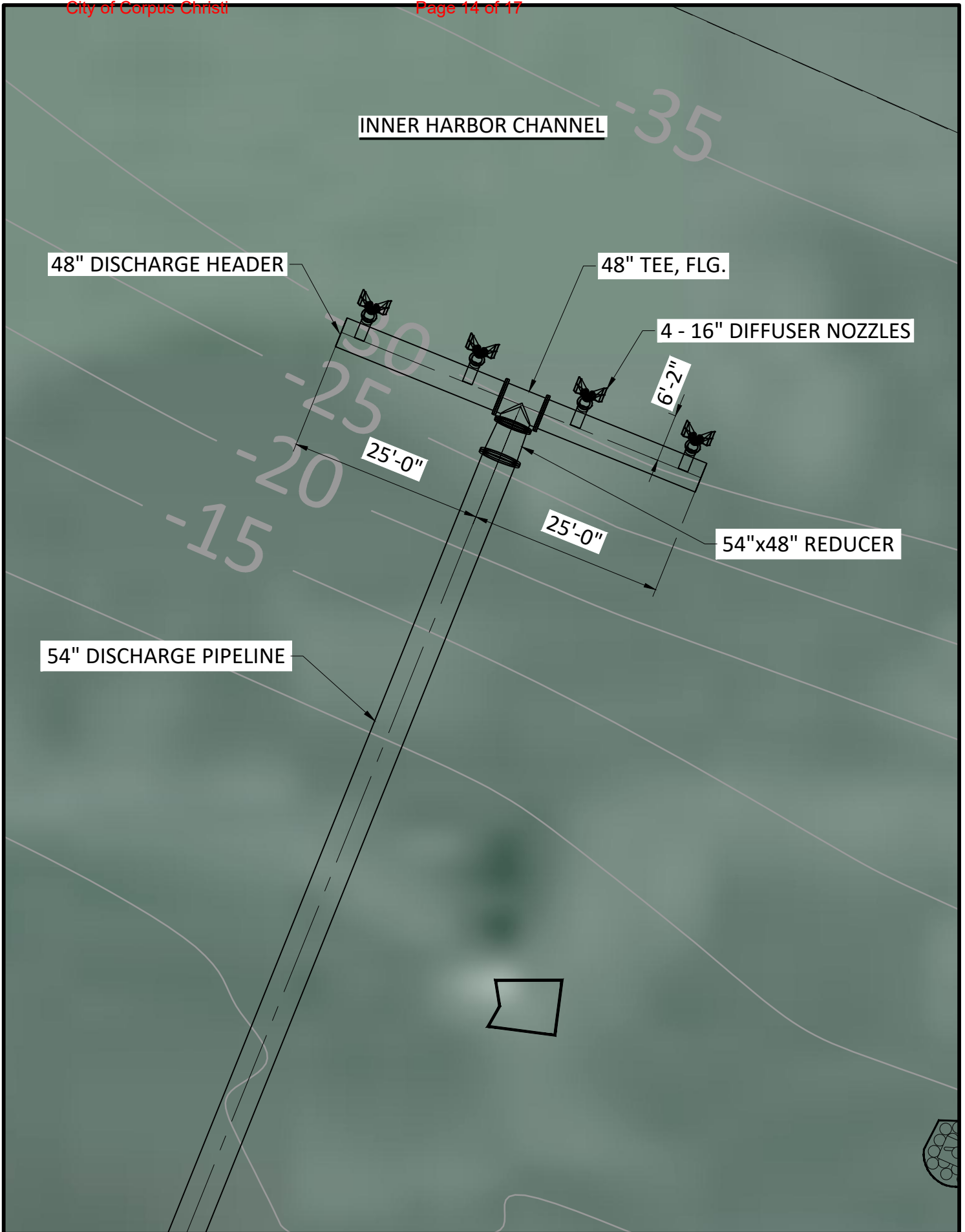
6
FIGURE



DISCHARGE PIPING PLAN

FIGURE 6

SCALE: NTS



INNER HARBOR CHANNEL

48" DISCHARGE HEADER

48" TEE, FLG.

4 - 16" DIFFUSER NOZZLES

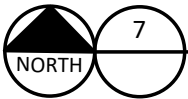
6'-2"

25'-0"

25'-0"

54"x48" REDUCER

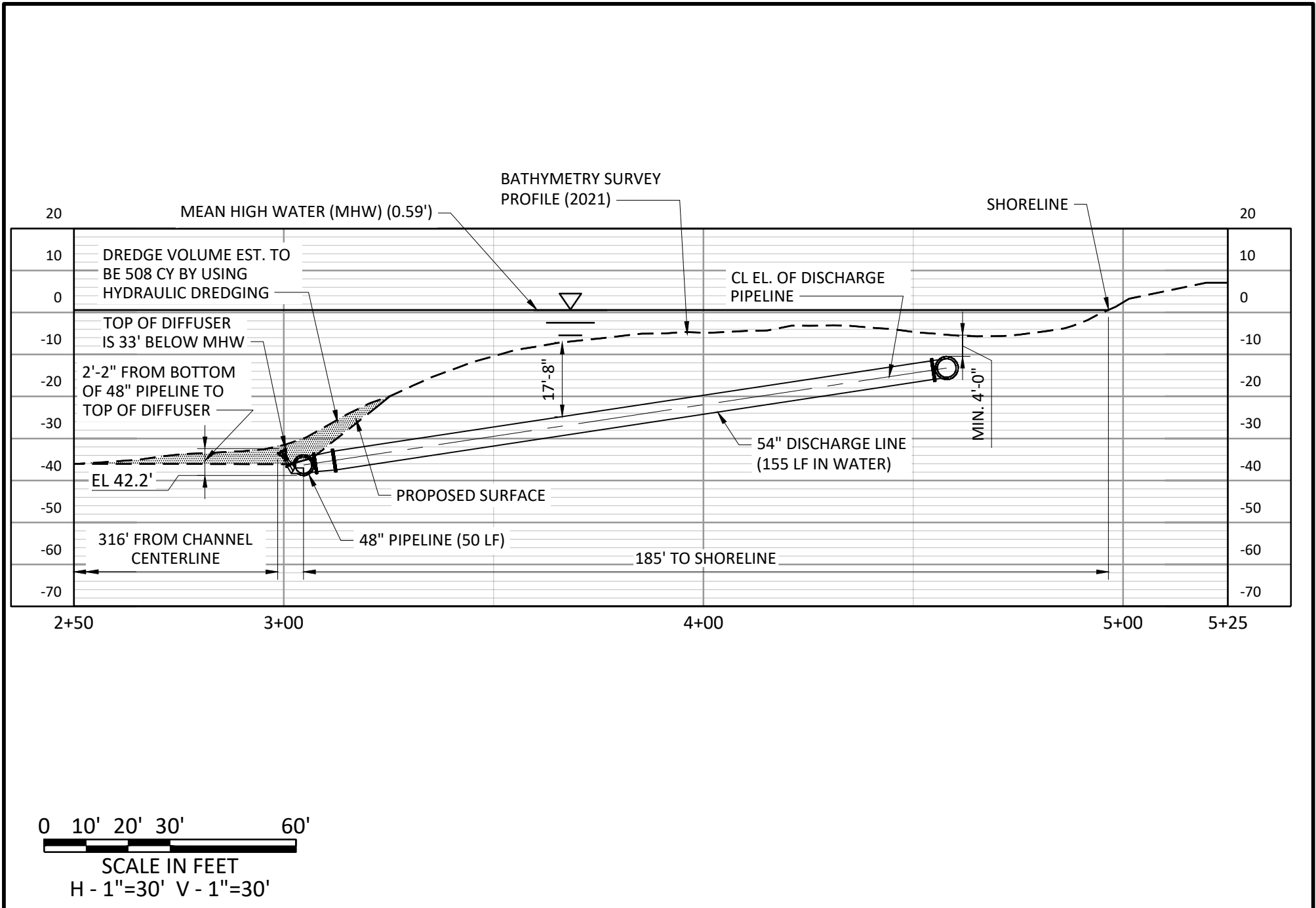
54" DISCHARGE PIPELINE



DISCHARGE ENLARGED PLAN

FIGURE 7

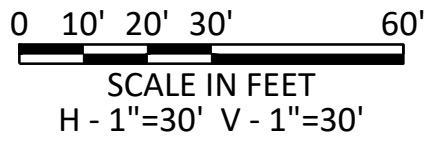
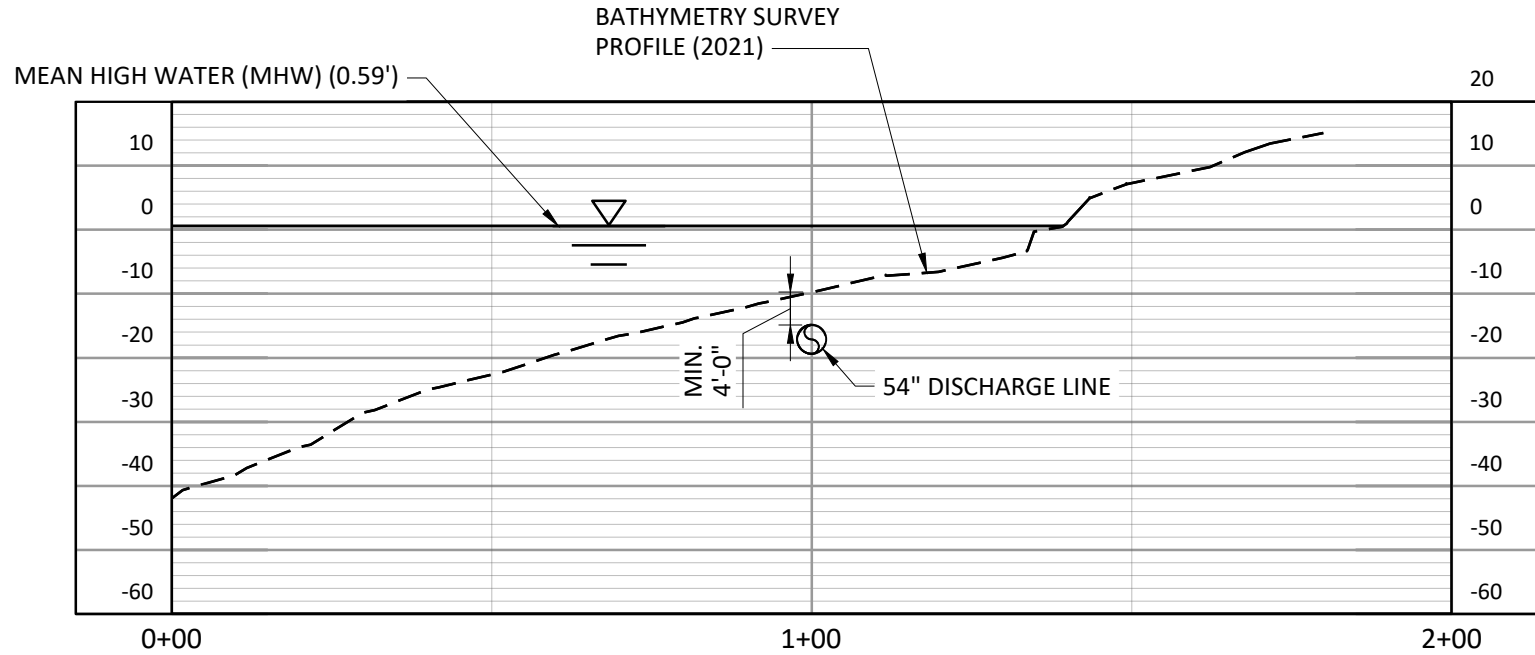
SCALE: NTS



DISCHARGE PIPING SECTION LOOKING EAST

FIGURE 8

SCALE: NTS



TYPICAL
DISCHARGE PIPING SECTION LOOKING EAST

FIGURE 9



SCALE: NTS



Corpus Christi Channel Industrial Canal/Main Turning Basin

Hydraulic Material Placement Option 1

Hydraulic Material Placement Option 2

Hydraulic Material Placement Option 3

- Project Components
- Hydraulic Material Placement
- Proposed Intake Pump Station

0 500 1,000
Feet

FRESE AND NICHOLS
FRESE AND NICHOLS, INC
800 N Shoreline Blvd #1600n
Corpus Christi, TX 78401
Phone - 361-561-6500



City of Corpus Christi
Seawater Desalination
Hydraulic Material Placement Options

FN JOB NO	COR20596
FILE NAME	1_Disposal.mxd
DATE	11/2/2023
Scale	1:10,000
DESIGNED	CS
DRAFTED	CS

8

FIGURE