

Water Supply Projects Updates

Chief Operations Officer, Mike Murphy, P.E.

Corpus Christi Water

May 23, 2023



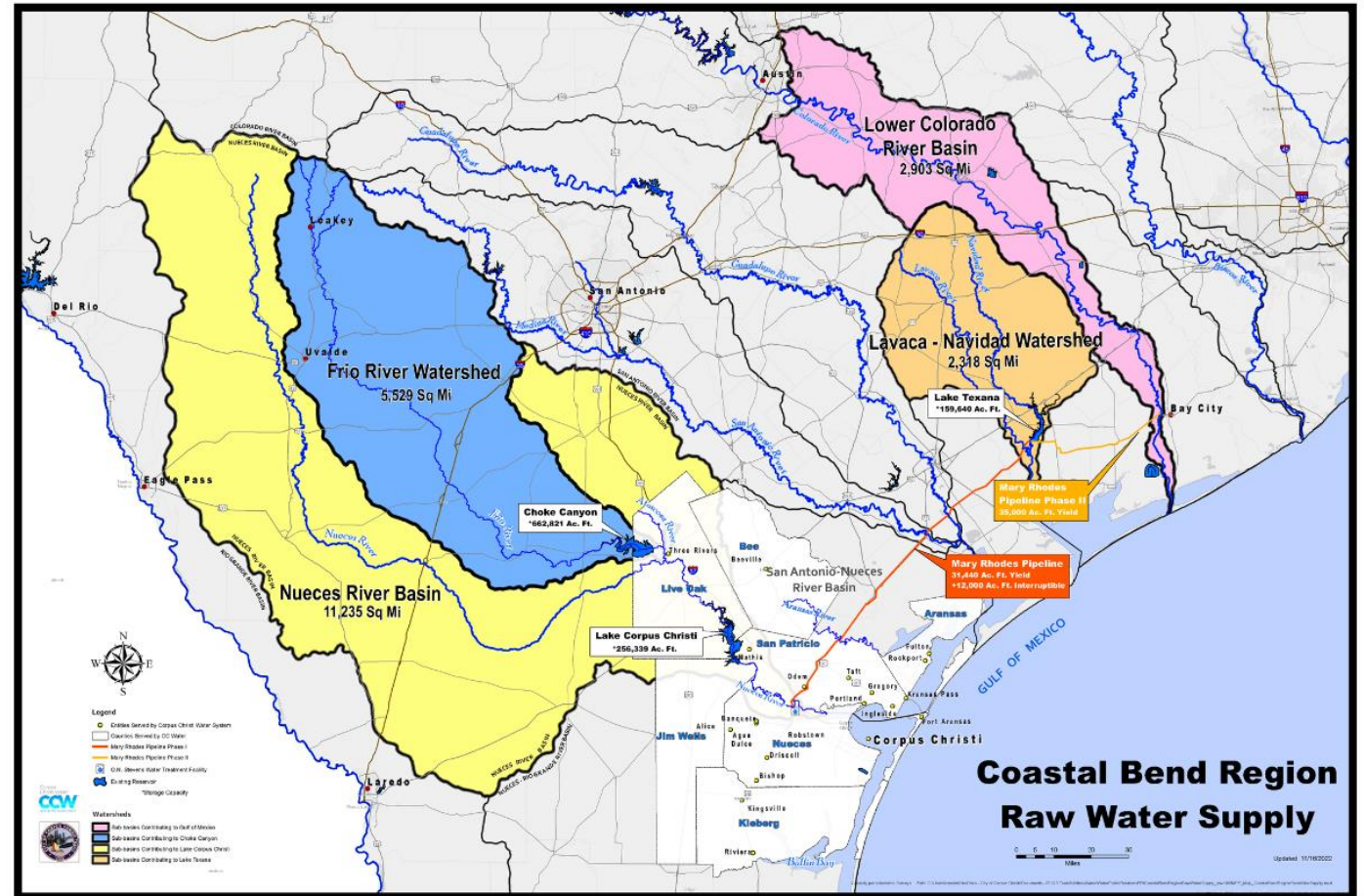
Corpus Christi Water

- 1,800 miles of water lines
- 80 million gallons per day (MGD) produced on average last fiscal year
- 500,000 people across the Coastal Bend supplied with water
- Superior water system rating by Texas Commission on Environmental Quality



Water Sources

- Lake Texana (Mary Rhodes Pipeline)
- Colorado River (Mary Rhodes Pipeline Phase II)
- Nueces River
 - Choke Canyon Reservoir (CCR)
 - Lake Corpus Christi (LCC)



Conservation 365

- Successful spring rain barrel program
- Increased engagement in Xeriscape concepts and 'low-flow' appliances at community events
- Ongoing water conservation educational initiatives are underway
 - Fall pipe insulation program to launch in preparation for freezing weather events



Water Supply Improvement Projects

Mary Rhodes Pipeline Phase I

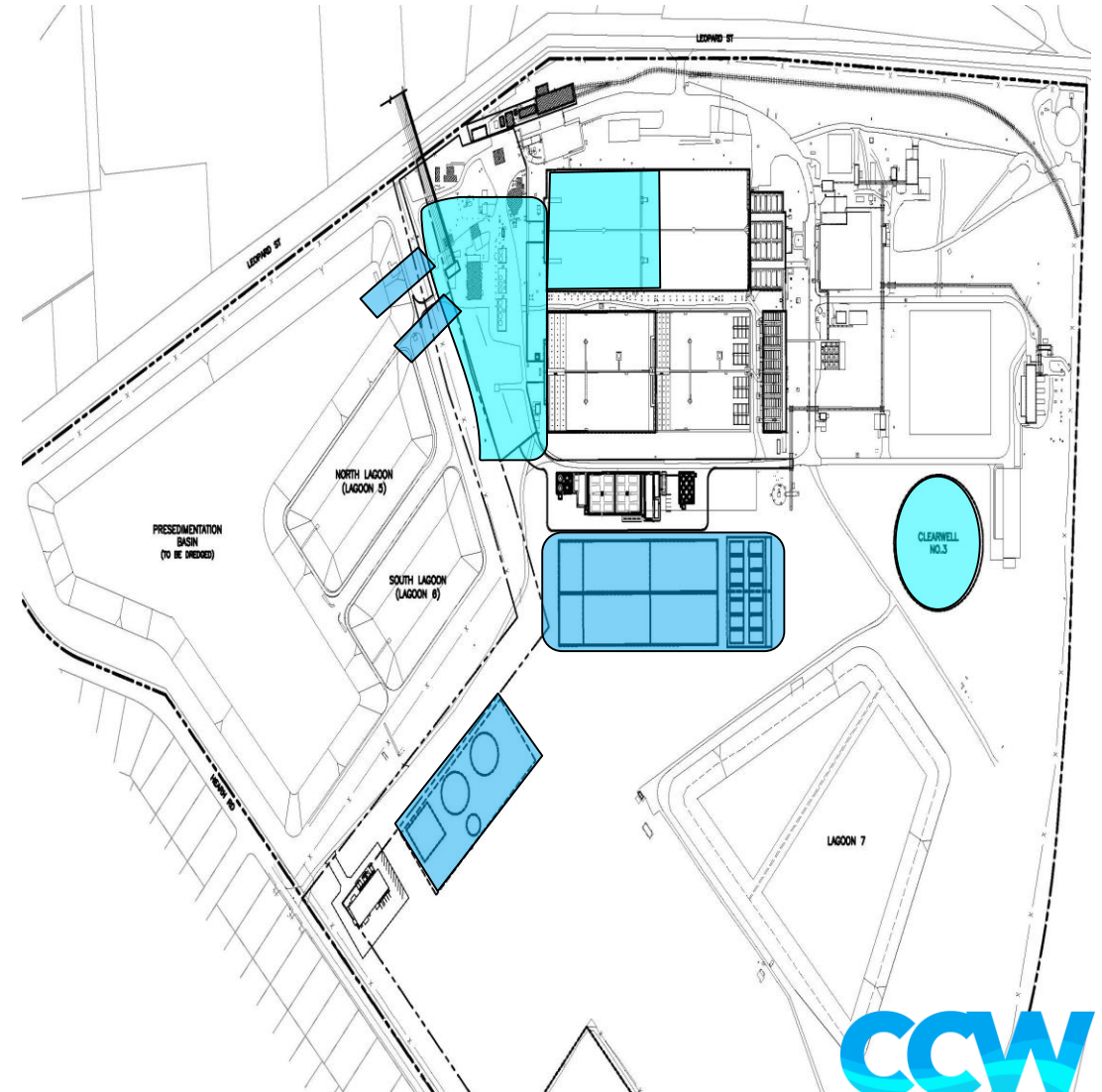
- Staff has outlined the 101-mile condition assessment scope of work

O.N. Stevens Water Treatment Plant

- Several upgrades are underway to produce a safe and reliable treatment capacity (RTC) of 135 MGD
- Planned projects are in design to meet RTC of 160 MGD

 Upgrades

 Planned projects



Diversified Water Portfolio Planning

Harbor Island Seawater Desalination Collaboration with Port Corpus Christi

- Include Pape Dawson Inc., for water integration

Evangeline Groundwater

- Continued meetings with HDR Inc., on hydrogeologic issues and water delivery

Barney Davis Seawater Desalination

- Review draft report from HDR Inc., desktop assessment

La Quinta Seawater Desalination

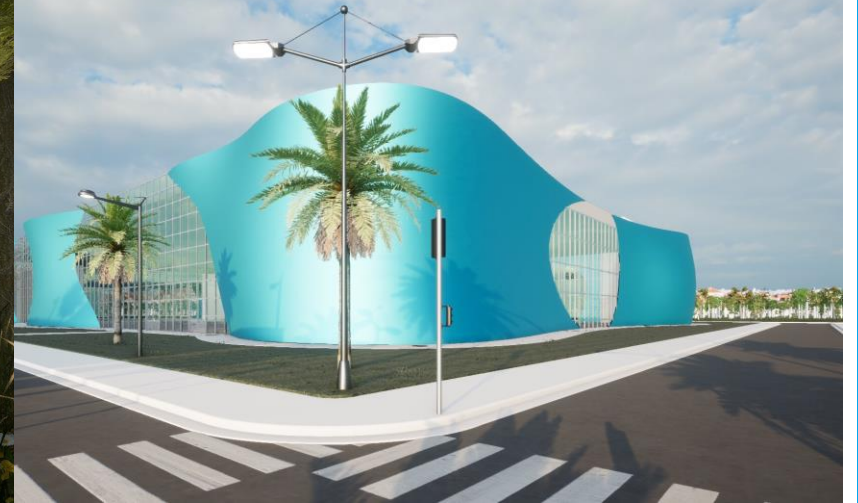
- Currently under review by TCEQ

Inner Harbor Seawater Desalination

- Intake permit (water right) granted in October 2022 by TCEQ

Inner Harbor Proposed Facility

Artistic Renderings



Inner Harbor Proposed Facility

Artistic Renderings



The top half of the slide features four horizontal, wavy stripes in various shades of blue, creating a water-like effect.

Thank you!

The logo for Corpus Christi Water (CCW) consists of the letters 'CCW' in a bold, blue, sans-serif font. The letters are filled with a gradient of blue and white, giving them a 3D, water-like appearance.

Corpus
Christi WaterSM
Serving the Coastal Bend